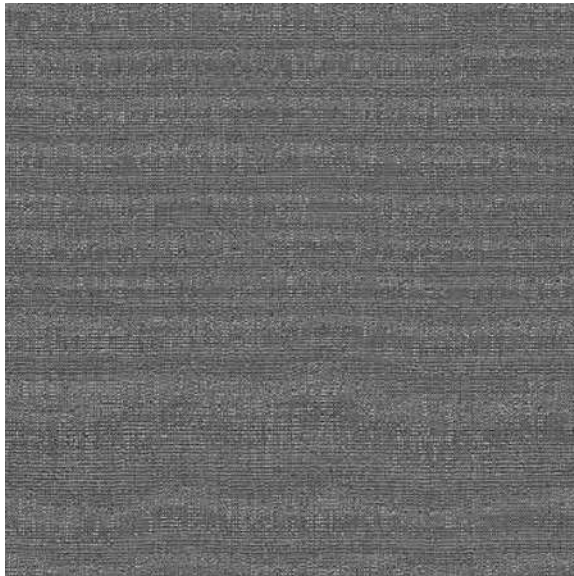


Lysr

This is Tygel — reimagined through woven tactility and expressive tone.

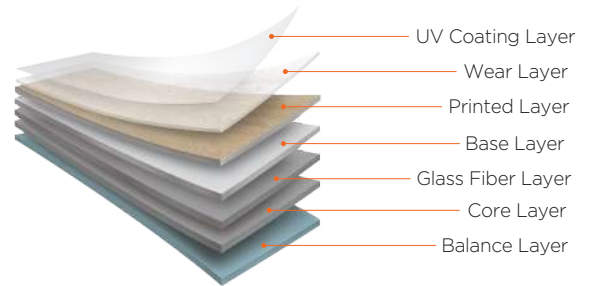




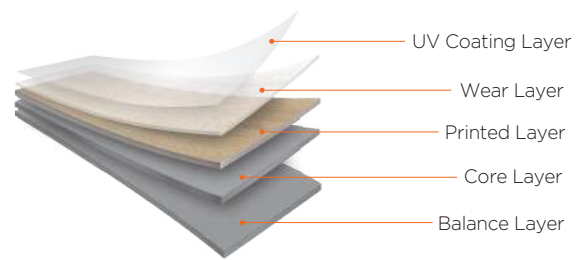
3mm / 5mm

600mm x 600mm

Looselay



Glue down

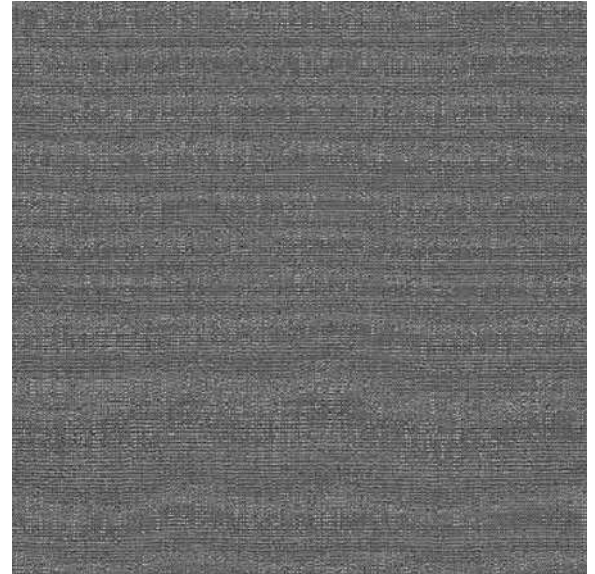


| Test Item | Standard | Results | Test Method |
|---------------------------------------|---|---------|-------------|
| Thickness | As specified $\pm 0.005\text{in./lin.ft.}(0.13\text{mm})$ | PASS | ASTM F386 |
| Wear Layer Thickness | - | PASS | ASTM F410 |
| Size and Squareness : Size | $\pm 0.016\text{in./lin.ft.}(0.4\text{mm}/305\text{mm})$ | PASS | ASTM F2055 |
| Size and Squareness : Squareness | $\leq 0.010\text{in.}(0.25\text{mm})$ | PASS | ASTM F2055 |
| Flexibility | 1 inch mandrel - no crack or break | PASS | ASTM F137 |
| Dimensional Stability and curl | $\leq 0.020\text{ in./lin.ft.}(0.51\text{mm}/305\text{mm})$ | PASS | ASTM F2199 |
| Residual Indentation | Average < 8% | PASS | ASTM F1914 |
| Static Load Limit | $\leq 0.005\text{"}(0.127\text{mm})@250\text{psi}$ | PASS | ASTM F970 |
| Resistance to Heat | Average & Max $\Delta E < 8.0$ | PASS | ASTM F1514 |
| Resistance to Light | Average & Max $\Delta E < 8.0$ | PASS | ASTM F1515 |
| Chemical Resistance | No more than Slight Change | PASS | ASTM F925 |
| Slip Resistance | ADA Compliant(> 0.50) | PASS | ASTM C1028 |
| Slip resistance-james machine | ≥ 0.50 | PASS | ASTM D2047 |
| Slip resistance-pendulum test | dry/wet ≥ 31 | PASS | ASTM E303 |
| Flammability | Cass I (>0.45 W/cm2) | PASS | ASTM E648 |
| Smoke Density (Flaming / Non Flaming) | < 450 | PASS | ASTM E662 |



Lysr

The collection introduces a refined textile surface that merges softness and structure, offering a balance suited to collective spaces, creative floorscapes, and moments of focused movement



3mm / 5mm

600mm x 600mm



Optimized Acoustic Reduction: Significantly reduces the transmission of impact noise between floors, enhancing overall comfort.



Structural Adaptability: It's flexible composition compensates for minor subfloor irregularities, facilitating easier installation.



Enhanced Walking Comfort: Provides a softer, more comfortable step by absorbing micro-vibrations.



Versatile Compatibility: Designed to integrate with a wide range of floor finishes—from vinyl to laminate and hardwood.

